

上海师范大学校歌

作词张斌、任仲伦
作曲申林

男领

女领

女高音

女中音

男高音

男低音

钢琴

D D/C

mp

黄浦 江畔春风

f *mp* *p* *mp*

男领

女领

女高

女中

男高

男低

钢琴



男领

女领

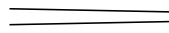
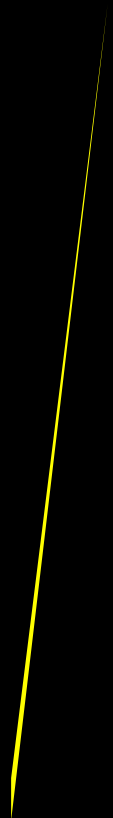
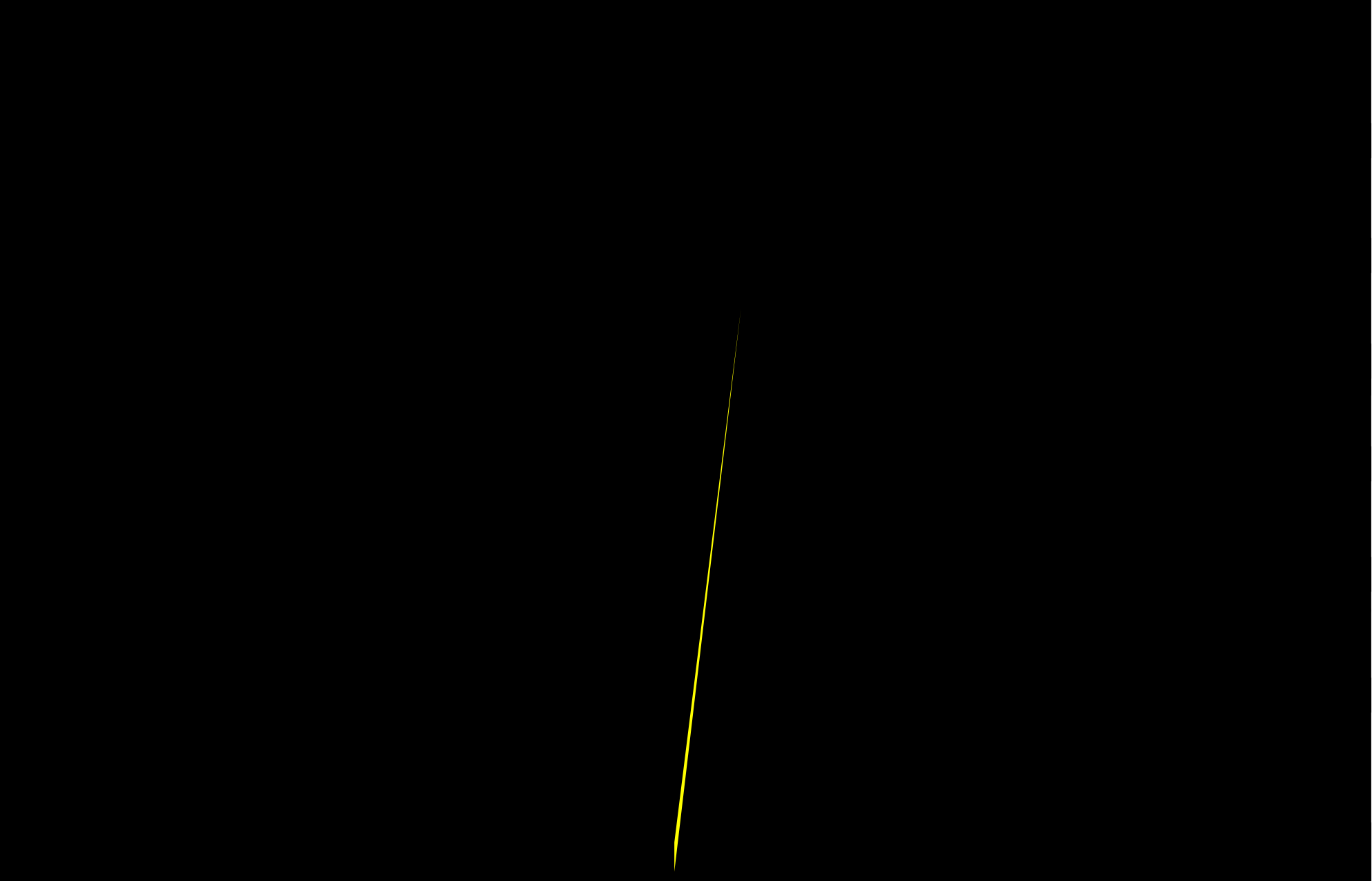
女高

女中

男高

男低

钢琴



Bm

F#m

G

G

A

男领

|

mp

|

pp

|



|

女领

|

|

|



|

pp

mp

女高

pp

|

mp

|

|



|

女中

pp

|

mp

|

|

|

|

男高

|

|

|

|

|

男低

|

|

|

|

|

钢琴

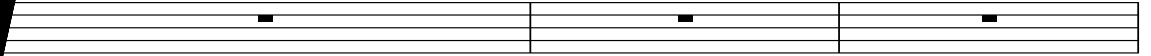
|

|

|

|

|



C

B7

Em

E7

A

上师大校歌

8

37

F#7

Bm D/A Ab^ø7

8

男领

Musical staff for Male Soloist (男领). The staff is in treble clef with a key signature of one sharp (F#). The music begins with a measure of rest, followed by a series of eighth and quarter notes. A dynamic marking of *mp* is present below the first note. The staff concludes with a whole note rest.

女领

Musical staff for Female Soloist (女领). The staff is in treble clef with a key signature of one sharp (F#). The music begins with a measure of rest, followed by a series of eighth and quarter notes. A dynamic marking of *mp* is present below the first note. The staff concludes with a whole note rest.

女高

Musical staff for Female Alto (女高). The staff is in treble clef with a key signature of one sharp (F#). The music begins with a measure of rest, followed by a series of eighth and quarter notes. A dynamic marking of *mp* is present below the first note. The staff concludes with a whole note rest.

女中

Musical staff for Female Tenor (女中). The staff is in treble clef with a key signature of one sharp (F#). The music begins with a measure of rest, followed by a series of eighth and quarter notes. A dynamic marking of *mp* is present below the first note. The staff concludes with a whole note rest.

男高

Musical staff for Male Alto (男高). The staff is in treble clef with a key signature of one sharp (F#). The music begins with a measure of rest, followed by a series of eighth and quarter notes. A dynamic marking of *mp* is present below the first note. The staff concludes with a whole note rest.

男低

Musical staff for Male Bass (男低). The staff is in treble clef with a key signature of one sharp (F#). The music begins with a measure of rest, followed by a series of eighth and quarter notes. A dynamic marking of *mp* is present below the first note. The staff concludes with a whole note rest.

钢琴

Musical staff for Piano (钢琴). The staff is in treble clef with a key signature of one sharp (F#). The music features complex chordal textures and arpeggiated patterns. A dynamic marking of *mf* is present at the bottom right. The bass line is in bass clef with a key signature of one sharp (F#) and includes a sixteenth-note triplet (marked '6') and a triplet of eighth notes (marked '3').

上师大校歌

42

男领

Musical staff for Male Soloist (男领) in G major, showing five measures of whole rests.

女领

Musical staff for Female Soloist (女领) in G major, showing five measures of whole rests.

女高

Musical staff for Female Alto (女高) in G major, showing five measures of whole rests.

女中

Musical staff for Female Tenor (女中) in G major, showing five measures of whole rests.

男高

Musical staff for Male Alto (男高) in G major, showing five measures of whole rests.

男低

Musical staff for Male Bass (男低) in G major, showing five measures of whole rests.

钢琴

Piano accompaniment for the 42nd measure, featuring a complex texture with chords and melodic lines in both hands. The right hand includes a sixteenth-note run and a sixteenth-note chord. The left hand features a bass line with chords and a sixteenth-note run. A dynamic marking of > is present at the beginning of the first measure.

上师大校歌

47

女高

女中

男高

男低

钢琴

D D/C G D/F# Em

mp

mp

p *p* *mp*

上师大校歌

11

53

11

男领

Musical staff for Male Soloist (男领). The staff is in treble clef with a key signature of two sharps (F# and C#). It contains a melodic line with a dotted quarter note followed by an eighth note, then a quarter note, and a half note. There are rests in the first two measures. Chords Bm, F#m, Em, and F#m are indicated above the staff. Dynamics include *p* and *mp*.

女领

Musical staff for Female Soloist (女领). The staff is in treble clef with a key signature of two sharps. It contains a melodic line with a dotted quarter note followed by an eighth note, then a quarter note, and a half note. There are rests in the first two measures. Dynamics include *p* and *mp*.

女高

Musical staff for Female Alto (女高). The staff is in treble clef with a key signature of two sharps. It contains a melodic line with a dotted quarter note followed by an eighth note, then a quarter note, and a half note. There are rests in the first two measures. Chords G/A, A, F#7, Bm, D/A, and Ab^{ø7} are indicated above the staff. Dynamics include *mf* and *mp*.

女中

Musical staff for Female Alto (女中). The staff is in treble clef with a key signature of two sharps. It contains a melodic line with a dotted quarter note followed by an eighth note, then a quarter note, and a half note. There are rests in the first two measures. Dynamics include *mf* and *p*.

男高

Musical staff for Male Alto (男高). The staff is in treble clef with a key signature of two sharps. It contains a melodic line with a dotted quarter note followed by an eighth note, then a quarter note, and a half note. There are rests in the first two measures. Dynamics include *mf* and *mp*.

男低

Musical staff for Male Bass (男低). The staff is in treble clef with a key signature of two sharps. It contains a melodic line with a dotted quarter note followed by an eighth note, then a quarter note, and a half note. There are rests in the first two measures. Dynamics include *mf* and *p*.

钢琴

Musical staff for Piano (钢琴). The staff is in treble clef with a key signature of two sharps. It contains a piano accompaniment with chords and a melodic line. Dynamics include *mf* and *mp*.



58

G G#m7-5 A Bm F#m Em/G Em D/A A7 D A/C# Bm F#m

男领

女领

女高

女中

男高

男低

钢琴

p *pp* *mp* *p* *pp* *mp* *p* *p*

上师大校歌

13

64

G

G

A

D

13

男领

女领

女高

女中

男高

男低

钢琴

69

G

D/F#

Em

G/A

A

A/G

F#7

男领

Musical staff for Male Lead (男领) in G major. The staff shows a melodic line with a fermata over the first measure. The notes are G4, A4, B4, C5, B4, A4, G4. The dynamics include a crescendo leading to a *mp* (mezzo-piano) marking.

女领

Musical staff for Female Lead (女领) in G major. The staff shows a melodic line with a fermata over the first measure. The notes are G4, A4, B4, C5, B4, A4, G4. The dynamics include a crescendo leading to a *mp* (mezzo-piano) marking.

女高

Musical staff for Female Alto (女高) in G major. The staff shows a melodic line with a fermata over the first measure. The notes are G4, A4, B4, C5, B4, A4, G4.

女中

Musical staff for Female Alto (女中) in G major. The staff shows a melodic line with a fermata over the first measure. The notes are G4, A4, B4, C5, B4, A4, G4.

男高

Musical staff for Male Alto (男高) in G major. The staff shows a melodic line with a fermata over the first measure. The notes are G4, A4, B4, C5, B4, A4, G4.

男低

Musical staff for Male Bass (男低) in G major. The staff shows a melodic line with a fermata over the first measure. The notes are G4, A4, B4, C5, B4, A4, G4.

钢琴

Musical staff for Piano (钢琴) in G major. The staff shows a piano accompaniment with chords and arpeggios in both the right and left hands. The right hand plays chords G, D/F#, and A, while the left hand plays chords Em, G/A, and F#7.

上师大校歌

15

73 Bm D/A Ab^ø7

D

15

男领

Musical staff for male soloist (男领). The staff shows a melodic line starting with a quarter note, followed by a half note, and then a quarter note. The dynamics are marked *mf*.

女领

Musical staff for female soloist (女领). The staff shows a melodic line starting with a quarter note, followed by a half note, and then a quarter note. The dynamics are marked *mf*.

女高

Musical staff for female soprano (女高). The staff shows a melodic line with eighth notes and quarter notes. Chords G, B⁷, Em, E⁷, and A are indicated above the staff. The dynamics are marked *mf*.

女中

Musical staff for female alto (女中). The staff shows a melodic line with eighth notes and quarter notes. The dynamics are marked *mf*.

男高

Musical staff for male soprano (男高). The staff shows a melodic line with eighth notes and quarter notes. The dynamics are marked *mf*.

男低

Musical staff for male bass (男低). The staff shows a melodic line with eighth notes and quarter notes. The dynamics are marked *mf*.

钢琴

Piano accompaniment (钢琴). The staff shows a complex accompaniment with chords and arpeggios. The dynamics are marked *mp*. There are triplets and sextuplets indicated by the numbers 3 and 6.

G



D/F#

Em

G/A

男领

女领

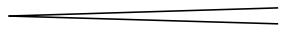
女高

女中

男高

男低

钢琴



男领

	—		—				
--	---	--	---	--	--	--	--

创造辉煌

创造

f

女领

	—						
--	---	--	--	--	--	--	--

女高

--	--	--	--	--	--	--	--

女中

--	--	--	--	--	--	--	--

男高

--	--	--	--	--	--	--	--

男低

--	--	--	--	--	--	--	--

钢琴

--	--	--	--	--	--	--